



PORT OF  
**TILBURY**  
LONDON

PLANNING ACT 2008

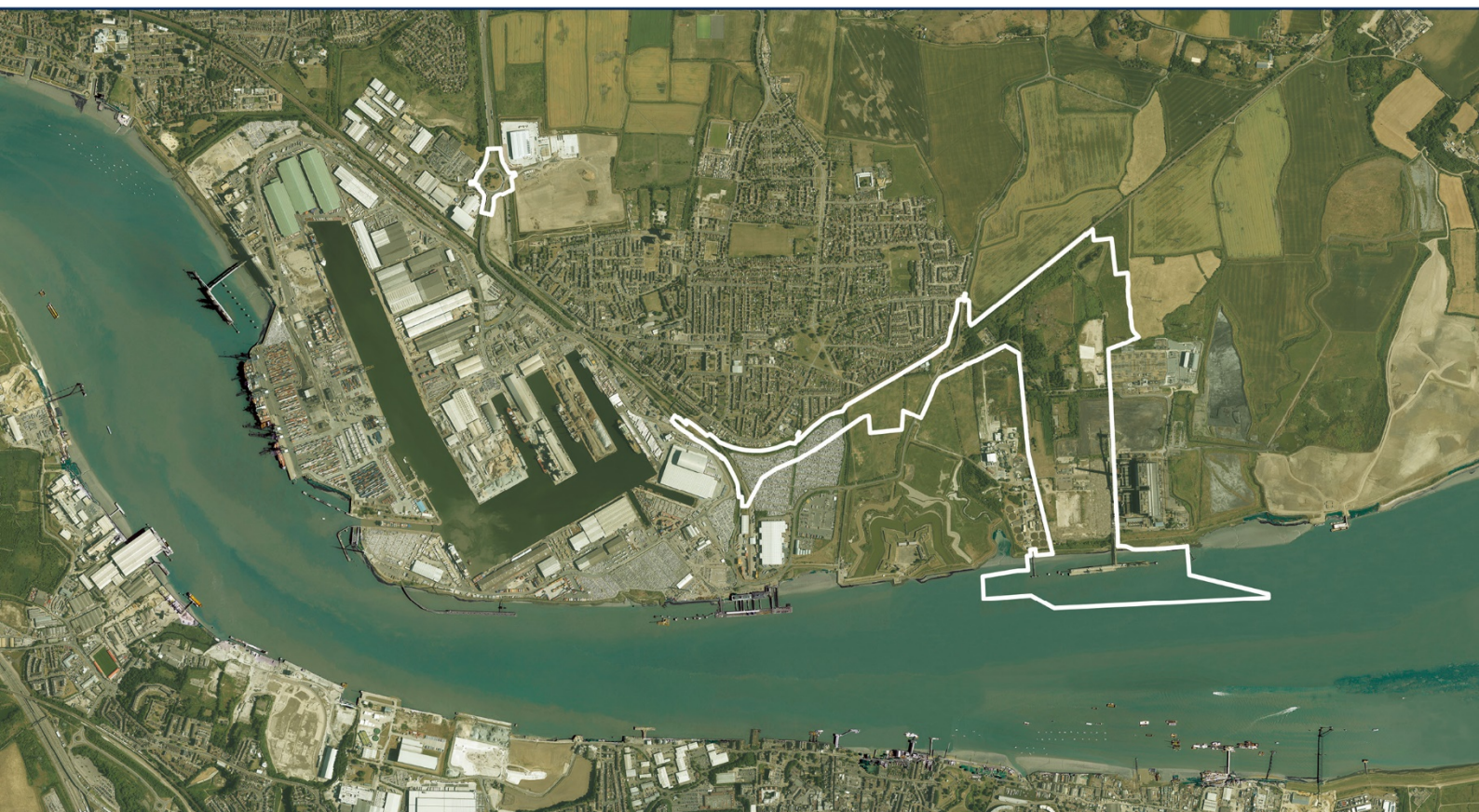
INFRASTRUCTURE PLANNING  
(APPLICATIONS: PRESCRIBED FORMS AND PROCEDURE) REGULATIONS 2009

PROPOSED PORT TERMINAL AT  
FORMER TILBURY POWER STATION

**TILBURY2**

SUMMARY OF DORMOUSE SURVEY RESULTS (2016)

DOCUMENT REF: APPENDIX 10.F



## Appendix 10.F: Summary of dormouse survey results from 2016

**KEY:**

	Nest tubes left <i>in situ</i> since 2015 and re-found in 2016
	Evidence of bird species
	Sighting of wood mouse <i>Apodemus sylvaticus</i> / yellow-necked mouse <i>Apodemus flavicollis</i> ; and/or field signs typical of <i>Apodemus</i> sp. mouse
	No evidence of use by any small mammal

Survey tube or box	15 September 2016	07 October 2016	01 November 2016	23 November 2016
x				
1	scattered leaves	nest of leaves	nest of unwoven <i>Buddleja</i> bark & grasses	feeding remains
4			scattered leaves	
4a				
5				
7			nest of leaves	3no. <i>Apodemus</i> mice on nest of leaves & stripped bark
8	scattered leaves			
9				
15				nest of leaves
16				
20	scattered leaves	nest of leaves	1no. <i>Apodemus</i> mouse on nest of leaves	nest of leaves
21N	scattered leaves	nest of leaves & feeding remains		
21S	scattered leaves		nest & droppings	scattered leaves
23		nest of leaves	scattered leaves & feeding signs	1no. <i>Apodemus</i> mouse on nest
24N			feeding remains	feeding remains & droppings
24S		feeding remains		
25				nest & feeding remains
31				feeding remains
42				nest (very old) & feeding remains
45				
53	scattered leaves	nest of leaves & droppings	scattered leaves & feeding signs	
61				
89				feathers (blue/great tit)
90				
92			droppings	feeding remains
94	nest of leaves/grasses & droppings	1no. <i>Apodemus</i> mouse on nest of leaves/grasses, droppings & feeding signs	nest of green leaves & unwoven grasses; droppings	1no. <i>Apodemus</i> mouse on nest
96		nest of leaves		
97	feathers (blue/great tit)			feathers (blue/great tit)
98				
99	feathers (blue/great tit)			
115				feeding remains & droppings
120				bird droppings
134		nest of leaves & feeding remains	feeding remains	feeding remains
140				bird droppings
141				
164				blue tit
166				nest of leaves, feeding remains & droppings
167				
243	nest of leaves	nest of leaves	1no. <i>Apodemus</i> mouse on nest of leaves & unwoven grasses	scattered leaves & droppings

Survey tube or box	15 September 2016	07 October 2016	01 November 2016	23 November 2016
251				
271				
364	1no. <i>Apodemus</i> mouse on nest of leaves & droppings			
367		nest of leaves	3no. <i>Apodemus</i> mouse with nest	scattered leaves
389			scattered leaves & feeding signs	
418	scattered leaves, feeding remains & droppings			nest of leaves, feeding remains & droppings
426	scattered leaves	nest of leaves/grasses	1no. <i>Apodemus</i> mouse in nest of unwoven grasses	nest of grasses with droppings see
460	scattered leaves, feeding remains & droppings	droppings	feeding remains & droppings	
464		3no. <i>Apodemus</i> mice on nest of leaves	2no. <i>Apodemus</i> mouse with nest	scattered leaves
470				
477				
483				
485		feeding remains	scattered leaves & feeding signs	feeding remains
486		feeding remains		
591			1no. <i>Apodemus</i> mouse on nest of leaves & droppings	
605				
628		1no. <i>Apodemus</i> mouse on nest		scattered leaves, feeding remains & droppings
632				
672		1no. <i>Apodemus</i> mouse on nest of scattered leaves & cleavers	1no. <i>Apodemus</i> mouse in nest of leaves, unwoven grasses & cleavers	
676				
721				
736				feeding remains & droppings
754	scattered leaves		feeding remains: large cache of blackberries	feeding remains
788				
793				
787				
814	scattered leaves & feeding remains			
819	scattered leaves	nest & droppings		
835				
993	scattered leaves & droppings	nest of leaves & droppings		feeding remains
995			1no. <i>Apodemus</i> mouse with nest of unwoven grasses	
1000	scattered leaves	feeding remains		
1007	blue tit			
1071	1no. <i>Apodemus</i> mouse on nest of leaves			
1074				bird droppings
1075				
1076			feeding remains: large cache of field maple seeds	feeding remains
1077				feeding remains
1081				
1083				
1084		scattered leaves		
1085				
1086				
1087				

Survey tube or box	15 September 2016	07 October 2016	01 November 2016	23 November 2016
1088				
1089				2no. <i>Apodemus</i> mice on nest of unwoven grass
1090				
1096			scattered leaves	
1097				
1098				
1099				feeding remains
1100				
1147		nest of leaves		
1149				
Box 1				
Box 2		2no. <i>Apodemus</i> mouse on nest	3no. <i>Apodemus</i> mouse with nest of leaves	1no. <i>Apodemus</i> mouse on nest of unwoven grass & leaves
Box 3	1no. <i>Apodemus</i> mouse on nest of leaves		nest of leaves	nest of leaves
Box 4				
Box 5				
Box 7				
Box 8				
Box 9			1no. <i>Apodemus</i> mouse with nest of leaves	
Box 10				
Box 11				
Box 12		1no. <i>Apodemus</i> mouse with nest		
Box 13		3no. <i>Apodemus</i> mouse with nest	3no. <i>Apodemus</i> mouse with nest	3no. <i>Apodemus flavicollis</i> in nest of leaves
Box 14			nest of green oak leaves, droppings & feeding signs	nest of leaves
Box 15				
Box 16				
<b>Total live <i>Apodemus</i> sightings</b>	<b>3</b>	<b>12</b>	<b>18</b>	<b>11</b>